

VW300.00
WRITE & WIPE



What is Write & Wipe?

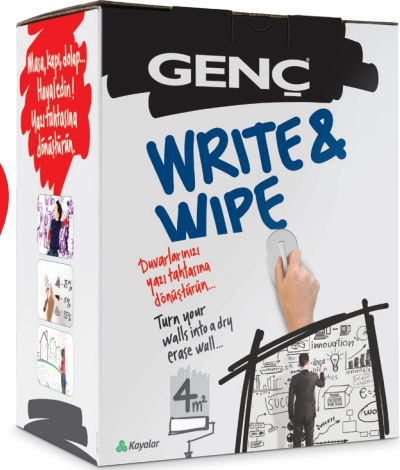
Genç Write&Wipe is modified acrylic urethane based, two component water borne clear paint designed to produce a whiteboard effect over previously painted or sealed surfaces.

After drying, use recommended dry erase marker to draw or write on the painted wall and then erase with a recommended eraser. Application is easy and it has minimal odor, so it is safe to use indoors.

Genç Write&Wipe is ideal for wood surfaces, old and new painted surfaces.

(Not applied on raw surfaces)

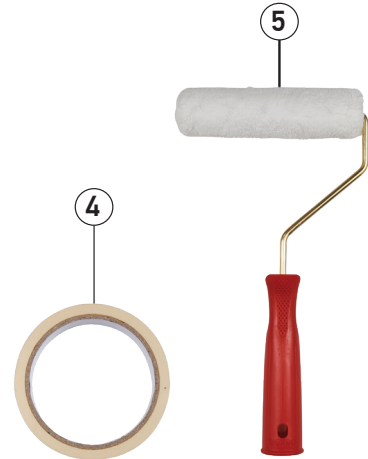
Everything you need
for the application is in
this box



All you needs for application as a kit
in Genç Write&Wipe box.
Therefore, there is no need to
spend extra time to supply tools for
painting.
Only think about choosing the
surface for the application!

Set Content:

1. Paint tray
2. G1 product
3. G2 product
4. Masking tape
5. Roller
6. Cubic sandpaper
7. Disposable gloves
8. Board marker
9. Board eraser
10. Wooden stirring bar



How to apply?

Specify the area as max 4m² with masking tape. Apply the Write&Wipe and remove the masking tape. After 7 days curing time, the surface will transform into an area that can be written and wiped.

You can write and wipe whatever you want also use the coated area over and over again. Moreover without stain and changing original color of the surface!

Detailed information can be found in "Directions To Use" included in the set.

Scan the QR code for instant access.



Application



Application ideas



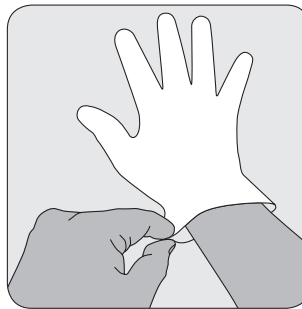
Office



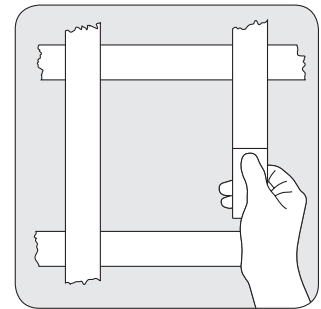
Children's room



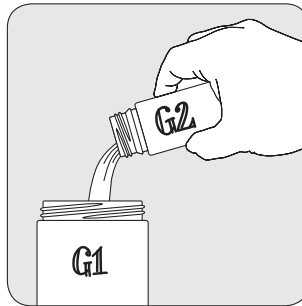
Kitchen



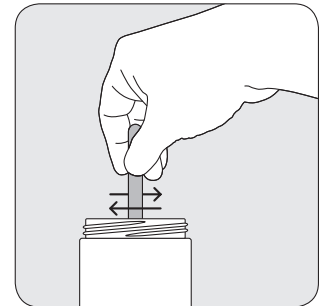
Wear the gloves in the application set.



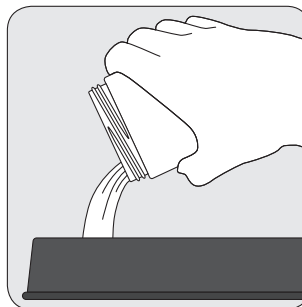
Specify area of 4 m² with masking tape.



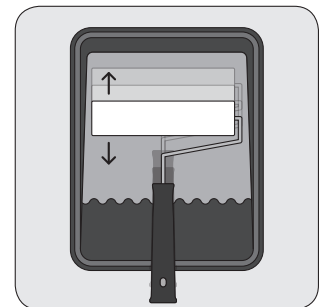
Add G2 box into G1 box.



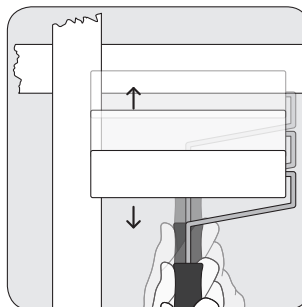
Stir thoroughly for about 2 minutes with mixing stick.



Pour the mixed content into a paint tray.



Saturate the roll with paint.



Spread the paint equally in the specified area with roll.



Use the coated surface as a write board after 7 days.